

Driverless solution software for autonomous shuttle and robot

101001
010101
010101
110110

ENGINEERING
SOFTWARE

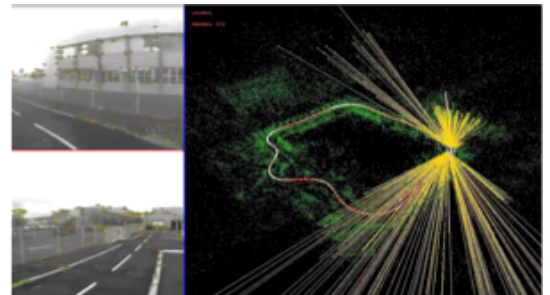
CAMERA LOCALISATION AND NAVIGATION WITHOUT SPECIFIC INFRASTRUCTURE

> Technology Solution

Large cities are developing massively and the world city population should explode by 2050. This urbanization impels lifestyle changes for private and industrial sites. These changes could be answer by the development of green transportation of people and goods.

The technology consists in :

- 1 | Multi-camera vision software allowing 3D perception that maps the environment in which the robot or the shuttle is located, detection of obstacles and anticipation of displacements.
- 2 | This digital solution does not require dedicated infrastructure and allows navigation in disturbed or changing environments.



#Keywords

Intelligent mobility
Shuttle
Autonomous robot
Transportation people and goods

Research Team

UMR 6602 CNRS/UCA/SIGMA/
Institut Pascal
Clermont-Ferrand, France

Michel DHOME

Partnership

Licensing

Intellectual Property

FR2981185, granted / WO2013053701
Priority filing in 2011
Requests granted EP / CN
Requests filed US, CA, AU, CN, JP, DE, ES, IT,
GB, SW, CH, SE, NL

Software registration in 2015

Competitive Advantages

- Easy and reliable calibration of sensors
- Does not require any specific infrastructure and driver
- Multi camera technology capable of communicating between other sensors (LIDAR, GPS, Odometer)
- Adaptative to constraints and specificities of each customer

Development Status

- Operational C++ software
- POC on autonomous shuttles and robots

Business Opportunities

- Transport on private sites (hospitals, amusement parks, airports, resort complex)
- Transport on industrial sites of employees and goods
- Transport on public sites like pedestrian zones or the first and last mile

SATT | SOCIÉTÉ
D'ACCÉLÉRATION
DU TRANSFERT
DE TECHNOLOGIE
GRAND CENTRE

Contact

Jean-Sébastien **GUEZ**
Business Developer
T+33 (0)7 62 01 68 18
jean-sebastien.guez@sattgc.com

SATT Grand Centre

CLERMONT-FERRAND | LA ROCHELLE | LIMOGES |
ORLÉANS | POITIERS | TOURS

Head Office : 8, rue Pablo Picasso
63000 CLERMONT-FERRAND - FRANCE

www.sattgc.com